



# HDP COOKBOOK

Bin Jiang

02/11/2017

# Hortonworks Resources URLs, Links

- Welcome Page

<http://sandbox.hortonworks.com:8888>

- Ambari Console

<http://sandbox.hortonworks.com:8080>

- Ambari Dashboard

<http://sandbox.hortonworks.com:8080/#/main/dashboard/metrics>

username: maria\_dev

password: maria\_dev

username: admin

password: set process \*

# Hortonworks Resources URLs, Links

- Secure Shell (SSH) Client

<http://sandbox.hortonworks.com:4200>

username: root

password: hadoop

- Sandbox SFTP Server

IP: [sandbox.hortonworks.com](http://sandbox.hortonworks.com)

port: 22

username: root

password: hadoop

# Hortonworks Resources URLs, Links

- Atlas

<http://sandbox.hortonworks.com:21000>

username: root

password: hadoop

- Zeppelin

<http://sandbox.hortonworks.com:9995>

- Falcon

<http://sandbox.hortonworks.com:15000>

username: falcon

# Hortonworks Resources URLs, Links

- NameNode logs

<http://sandbox.hortonworks.com:50070/logs/>

- NameNode UI

<http://sandbox.hortonworks.com:50070/dfshealth.html#tab-overview>

- NameNode JMX

<http://sandbox.hortonworks.com:50070/jmx>

# Hortonworks Resources URLs, Links

- MapReduce Job History

<http://sandbox.hortonworks.com:19888/jobhistory>

- MapReduce Job Logs

<http://sandbox.hortonworks.com:19888/logs/>

- Yarn Resource Manager UI

<http://sandbox.hortonworks.com:8088/cluster>

- Yarn Resource Logs

<http://sandbox.hortonworks.com:8088/logs/>



# Hortonworks Resources URLs, Links

- Tez View

[http://sandbox.hortonworks.com:8080/#/main/views/TEZ/0.7.0.2.3.4.0-161/TEZ\\_CLUSTER\\_INSTANCE](http://sandbox.hortonworks.com:8080/#/main/views/TEZ/0.7.0.2.3.4.0-161/TEZ_CLUSTER_INSTANCE)

- HDFS View

<http://sandbox.hortonworks.com:8080/#/main/views/FILES/1.0.0/Files>

- Hive View

[http://sandbox.hortonworks.com:8080/#/main/views/HIVE/1.0.0/AUTO\\_HIVE\\_INSTANCE](http://sandbox.hortonworks.com:8080/#/main/views/HIVE/1.0.0/AUTO_HIVE_INSTANCE)

# Hortonworks Resources URLs, Links

- HBase master UI

<http://sandbox.hortonworks.com:16010/master-status>

- HBase Logs

<http://sandbox.hortonworks.com:16010/logs/>

- Oozie Web Console

<http://sandbox.hortonworks.com:11000/oozie/?user.name=admin>



# Hortonworks Resources URLs, Links

- Storm UI

<http://sandbox.hortonworks.com:8744/index.html>

- Atlas Dashboard

<http://sandbox.hortonworks.com:21000/#!/search?user.name=admin>

- Kafka Zookeeper Connect

[sandbox.hortonworks.com:2181](http://sandbox.hortonworks.com:2181)

- Kafka Broker Connect

[sandbox.hortonworks.com:6667](http://sandbox.hortonworks.com:6667)

# Hortonworks Resources URLs, Links

- Nifi Web Console

<http://sandbox.hortonworks.com:9090/nifi>

- Ranger Admin

<http://localhost:6080/login.jsp>

Username : admin

Password: admin

# Hortonworks Resources URLs, Links

- Spark History Server UI:

<http://sandbox.hortonworks.com:18080/>

- Zeppelin Notebook:

<http://sandbox.hortonworks.com:9995>

# How to reset ambari admin password

- Start your sandbox, ssh using a terminal or the web browser link:
- Run the following commands:
  - ***ambari-admin-password-reset***
- The following text will appear.
  - ***Please set the password for admin:***
  - ***Please retype the password for admin:***
- After setting and retyping your new password, type the command:
  - ***ambari-agent restart***

# How to check the ambari services

- List all services:

```
curl -u admin:87552790 -X GET
```

```
http://sandbox.hortonworks.com:8080/api/v1/clusters/Sandbox/services
```

- AMBARI\_METRICS service

```
curl -u admin:87552790 -X GET
```

```
http://sandbox.hortonworks.com:8080/api/v1/clusters/Sandbox/services/AMBA  
RI_METRICS
```

- ATLAS service

```
curl -u admin:87552790 -X GET
```

```
http://sandbox.hortonworks.com:8080/api/v1/clusters/Sandbox/services/ATLAS
```

- FALCON service

```
curl -u admin:87552790 -X GET
```

```
http://sandbox.hortonworks.com:8080/api/v1/clusters/Sandbox/services/FALCO  
N
```

# How to check the ambari services

- FLUME service

```
curl -u admin:87552790 -X GET
```

```
http://sandbox.hortonworks.com:8080/api/v1/clusters/Sandbox/services/FLUME
```

- HBASE service

```
curl -u admin:87552790 -X GET
```

```
http://sandbox.hortonworks.com:8080/api/v1/clusters/Sandbox/services/HBASE
```

- HDFS service

```
curl -u admin:87552790 -X GET
```

```
http://sandbox.hortonworks.com:8080/api/v1/clusters/Sandbox/services/HDFS
```

- HIVE service

```
curl -u admin:87552790 -X GET
```

```
http://sandbox.hortonworks.com:8080/api/v1/clusters/Sandbox/services/HIVE
```



# How to check the ambari services

- KAFKA service

```
curl -u admin:87552790 -X GET
```

```
http://sandbox.hortonworks.com:8080/api/v1/clusters/Sandbox/services/KAFKA
```

- KNOX service

```
curl -u admin:87552790 -X GET
```

```
http://sandbox.hortonworks.com:8080/api/v1/clusters/Sandbox/services/KNOX
```

- MAPREDUCE service

```
curl -u admin:87552790 -X GET
```

```
http://sandbox.hortonworks.com:8080/api/v1/clusters/Sandbox/services/MAPREDUCE2
```

- NIFI service

```
curl -u admin:87552790 -X GET
```

```
http://sandbox.hortonworks.com:8080/api/v1/clusters/Sandbox/services/NIFI
```

# How to check the ambari services

- PIG service

```
curl -u admin:87552790 -X GET
```

```
http://sandbox.hortonworks.com:8080/api/v1/clusters/Sandbox/services/PIG
```

- RANGER service

```
curl -u admin:87552790 -X GET
```

```
http://sandbox.hortonworks.com:8080/api/v1/clusters/Sandbox/services/RANGER
```

- SLIDER service

```
curl -u admin:87552790 -X GET
```

```
http://sandbox.hortonworks.com:8080/api/v1/clusters/Sandbox/services/SLIDER
```

- SPARK service

```
curl -u admin:87552790 -X GET
```

```
http://sandbox.hortonworks.com:8080/api/v1/clusters/Sandbox/services/SPARK
```

# How to check the ambari services

- SQOOP service

```
curl -u admin:87552790 -X GET
```

```
http://sandbox.hortonworks.com:8080/api/v1/clusters/Sandbox/services/SQOOP
```

- STORM service

```
curl -u admin:87552790 -X GET
```

```
http://sandbox.hortonworks.com:8080/api/v1/clusters/Sandbox/services/STORM
```

- TEZ service

```
curl -u admin:87552790 -X GET
```

```
http://sandbox.hortonworks.com:8080/api/v1/clusters/Sandbox/services/TEZ/0
```

- YARN service

```
curl -u admin:87552790 -X GET
```

```
http://sandbox.hortonworks.com:8080/api/v1/clusters/Sandbox/services/YARN
```

# How to check the ambari services

- ZEPPLIN service

```
curl -u admin:87552790 -X GET
```

```
http://sandbox.hortonworks.com:8080/api/v1/clusters/Sandbox/services/ZEPPELIN
```

- ZOOKEEPER service

```
curl -u admin:87552790 -X GET
```

```
http://sandbox.hortonworks.com:8080/api/v1/clusters/Sandbox/services/ZOOKEEPER
```

# How to increase the disk size of HDP Sandbox VM

- Go to C:\Program Files\Oracle\VirtualBox on your laptop (Windows OS)
- Run the following command to rename VM file from vmdk to vdi
  - VBoxManage clonehd "C:\Users\BigDataTraining\VirtualBox VMs\Hortonworks Sandbox with HDP 2.4\Hortonworks Sandbox with HDP 2.4-disk1.vmdk" "C:\Users\BigDataTraining\VirtualBox VMs\Hortonworks Sandbox with HDP 2.4\Hortonworks Sandbox with HDP 2.4-disk1.vdi" --format VDI --variant Standard
- Run the following command to resize the vdi from 48G to 150G
  - VBoxManage modifyhd "C:\Users\BigDataTraining\VirtualBox VMs\Hortonworks Sandbox with HDP 2.4\Hortonworks Sandbox with HDP 2.4-disk1.vdi" --resize 153600



# How to increase the disk size of HDP Sandbox VM

```
Command Prompt

2016-09-12 06:18 PM          390,248 VBoxSDL.dll
2016-09-12 06:18 PM        1,057,824 VBoxSDL.exe
2016-09-12 06:18 PM          43,312 VBoxSharedClipboard.dll
2016-09-12 06:18 PM        1,055,656 VBoxSharedCrOpenGL.dll
2016-09-12 06:18 PM          52,648 VBoxSharedFolders.dll
2016-09-12 06:16 PM          20,920 VBoxSupLib.dll
2016-09-12 06:18 PM        4,888,640 VBoxSVC.exe
2016-09-12 06:18 PM          162,808 VBoxTestOGL.exe
2016-09-12 06:18 PM        2,765,944 VBoxVMM.dll
2016-09-12 06:20 PM       14,680,720 VBoxWebSrv.exe
2016-09-12 06:15 PM        2,992,753 VirtualBox.chm
2016-09-12 06:18 PM        9,439,480 VirtualBox.dll
2016-09-12 06:18 PM        1,058,336 VirtualBox.exe
2016-09-12 06:18 PM        1,117,728 VMMR0.r0
2016-09-12 06:18 PM          830,856 VMMRC.rc
2016-09-19 09:35 PM    <DIR>          x86
          64 File(s)    148,445,759 bytes
          8 Dir(s)    837,936,463,872 bytes free

C:\Program Files\Oracle\VirtualBox>VBoxManage clonehd "C:\Users\BigDataTraining\VirtualBox VMs\Hortonworks Sandbox with
HDP 2.4\Hortonworks Sandbox with HDP 2.4-disk1.vmdk" "C:\Users\BigDataTraining\VirtualBox VMs\Hortonworks Sandbox with H
DP 2.4\Hortonworks Sandbox with HDP 2.4-disk1.vdi" --format VDI --variant Standard
0%...10%...20%...30%...40%...50%...60%...70%...80%...90%...100%
Clone medium created in format 'VDI'. UUID: aecaa4f0-f9c9-47de-823d-9f3007640d25

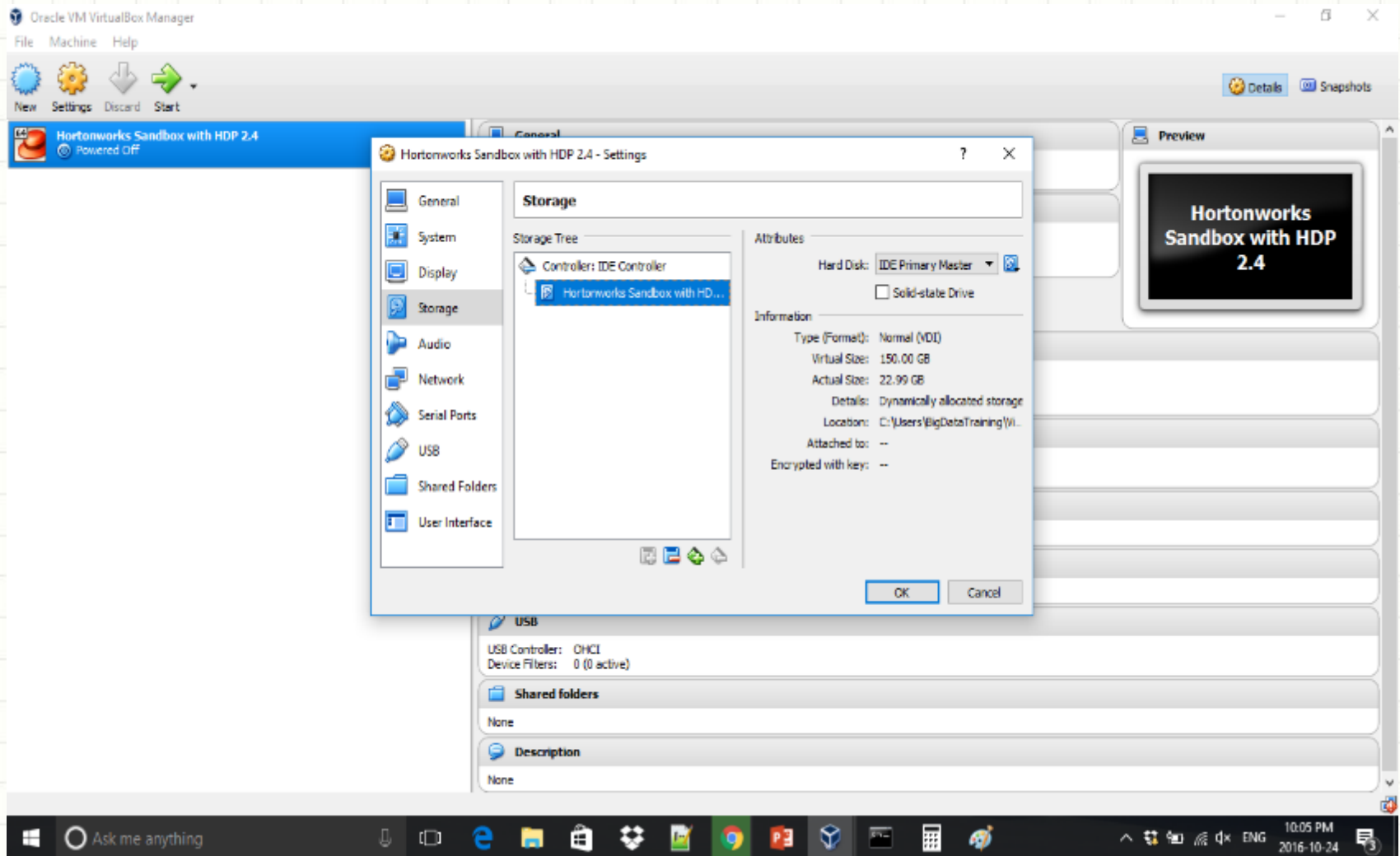
C:\Program Files\Oracle\VirtualBox>VBoxManage modifyhd "C:\Users\BigDataTraining\VirtualBox VMs\Hortonworks Sandbox wit
h HDP 2.4\Hortonworks Sandbox with HDP 2.4-disk1.vdi" --resize 153600
0%...10%...20%...30%...40%...50%...60%...70%...80%...90%...100%
```



# How to increase the disk size of HDP Sandbox VM

- Open virtualbox, remove .vmdk image and add new .vdi image file
  - Choose Hortonworks Sandbox with HDP 2.4
  - Click Settings
  - Click Storage
  - Click – sign to remove .vmdk image file
  - Click + sign (add hard disks), then choose existing disk to add new .vdi image file, you will see the virtual size becomes 150G
- Download gparted iso image from the following link:
  - [http://sourceforge.net/projects/gparted/?source=typ\\_redirect](http://sourceforge.net/projects/gparted/?source=typ_redirect)

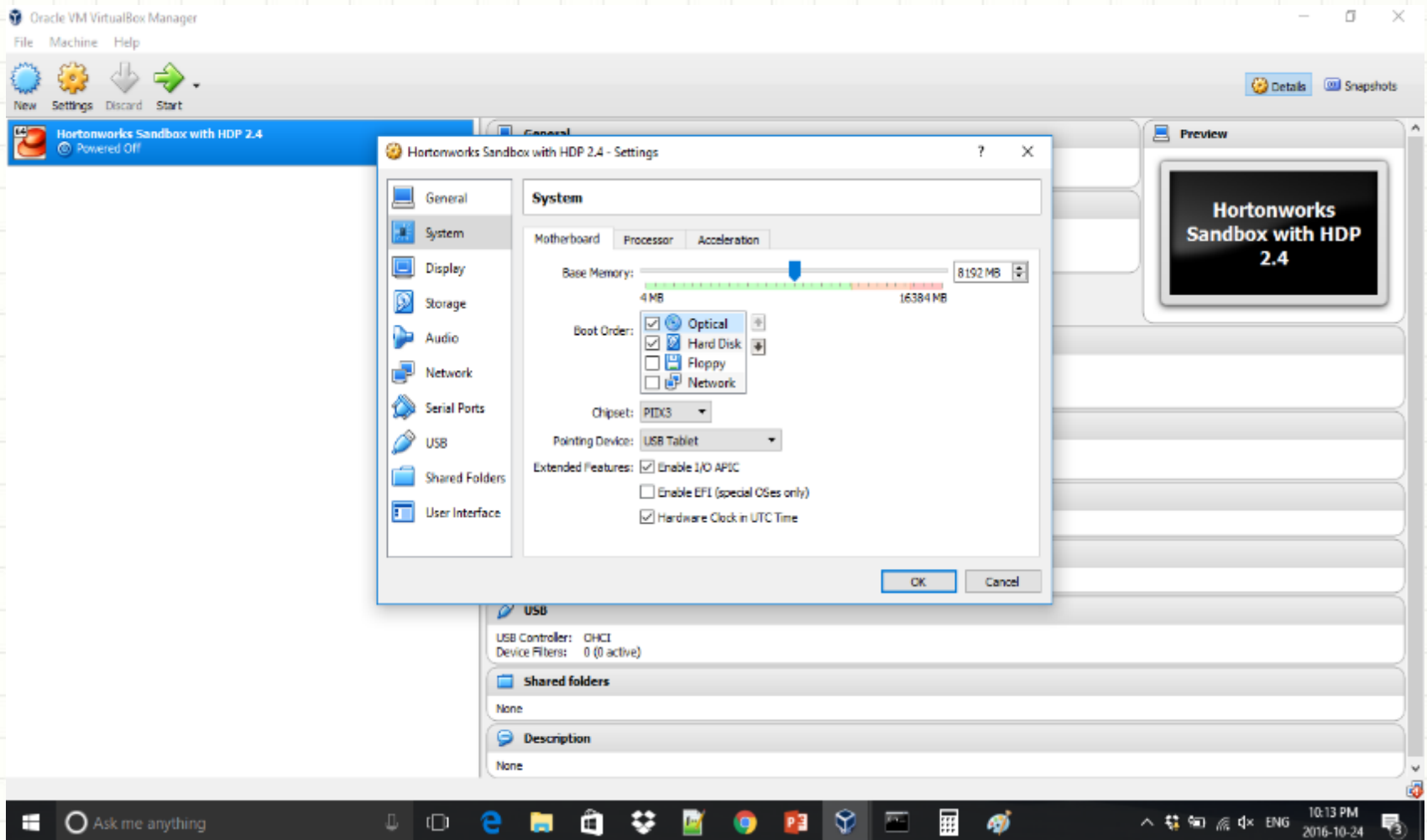
# How to increase the disk size of HDP Sandbox VM



# How to increase the disk size of HDP Sandbox VM

- Add gparted iso image as cdrom drive on virtualbox, make cdrom as first device on boot order and boot virtualbox using gparted image
  - Go to settings, choose storage
  - Click + sign (adds optical drivers) to add gparted iso image as cdrom
  - Click system and make Optical as first on boot order
- Start Hortonworks Sandbox with HDP 2.4
- Using gparted gui, resize the partition, save changes, shutdown virtualbox and remove gparted cdrom iso image
  - Click Enter four times and choose vg\_sanbox

# How to increase the disk size of HDP Sandbox VM



# How to increase the disk size of HDP Sandbox VM

- Start Sandox and Open SSH to perform commands below:
  - `lvextend -L +100G /dev/mapper/vg_sandbox-lv_root`
  - `resize2fs /dev/mapper/vg_sandbox-lv_root`
- Run the following command to check new partition size:
  - `df -h`